

Printing Films Using CorelDraw X5+

These instructions are for those using a RIP with an inkjet printer or using a postscript laser printer. If a RIP is not available, see our instructions on printing separations from Photoshop without a RIP.

If using CorelDraw to output your Photoshop channel color separations, the easiest method is to save the file in Photoshop as a PDF.

When saving the PDF from Photoshop, make sure the RGB channels have not been deleted as they are needed.

If there's no RGB channels, then simply make 3 blank channels and move them to the top of the channels panel above all the colors of the separation.

Next in Photoshop go to Image > Mode > RGB Color. This converts the image to RGB format and retains the separation intact.

It doesn't matter if the RGB channels are blank as the external program just needs them to read and open the file.

The sample below is exactly how the file needs to appear in Photoshop prior to saving as a PDF with the RGB Channels included.

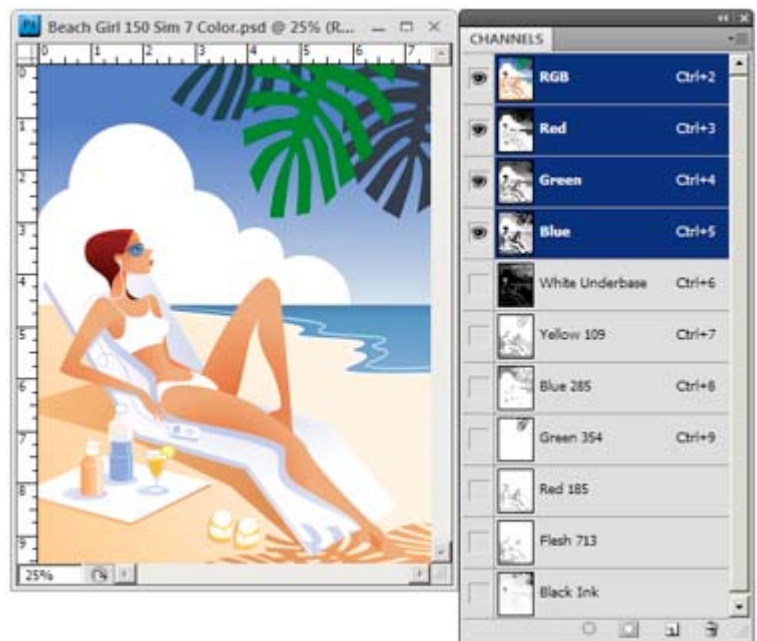
Never name any of the color channels "black, yellow, cyan or magenta" when saving a color separation in Photoshop that is to be printed from an external application.

Doing so will be confusing when printing the separations as multiple colors of the same name will be seen within the print dialog functions. Its also possible that printing errors will result or the file may refuse to open.

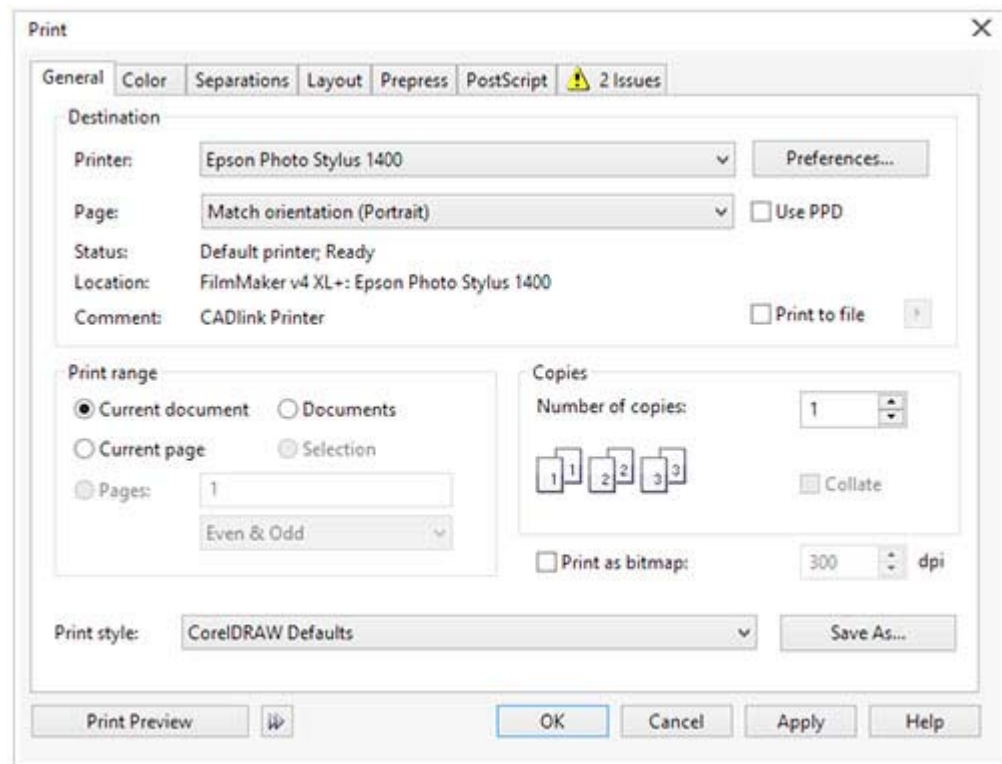
Therefore, when naming these common color channels, always label them "black ink" or "yellow ink" or just add something else to its name such as a PMS number.

**File Ready To Be
Saved As A PDF.**

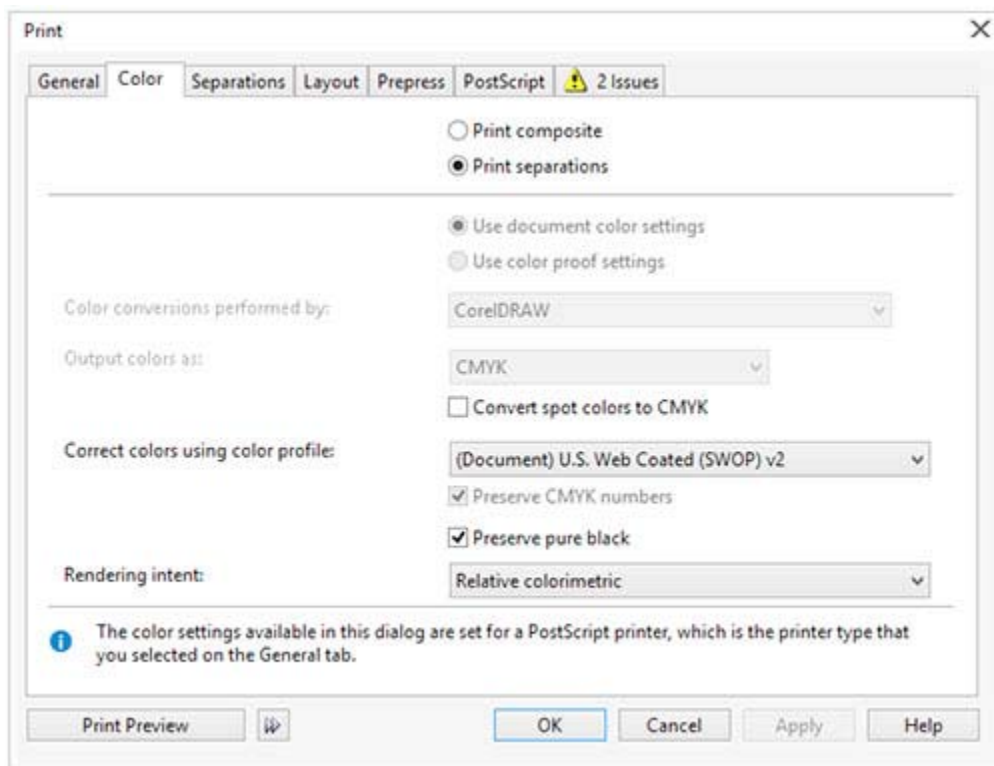
RGB Channels Intact



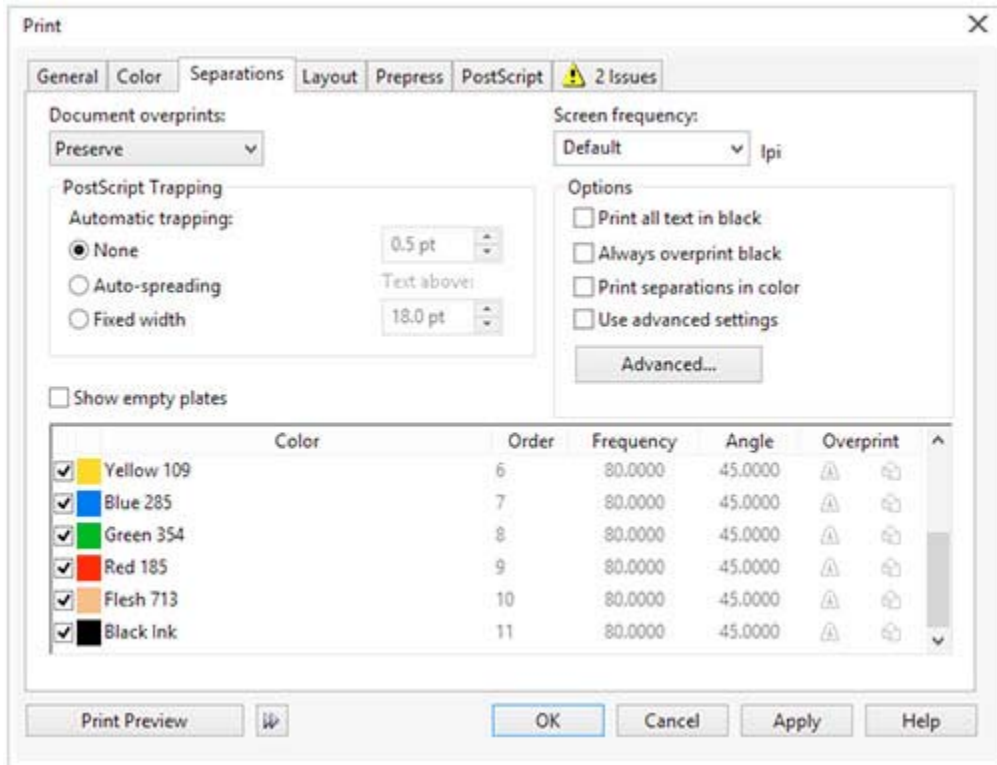
In CorelDraw go to File > Open and open your PDF file into CorelDraw.
Select Print from the File Menu.
In the General Window, select your RIP or Printer.



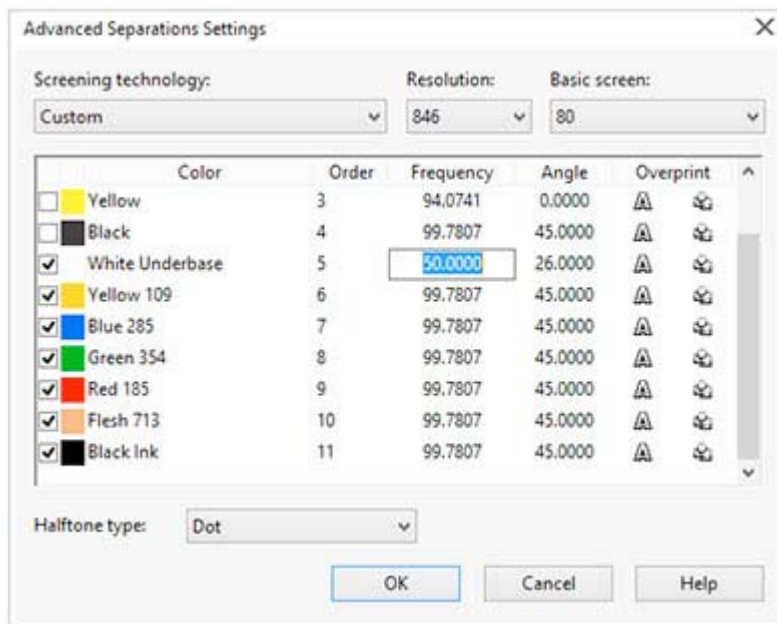
Next select the Color Tab and click the Print Separations button.



In the Separations Tab, deselect the process colors on the top of the list and make sure all the colors within the color separation are checked.



Next click the “Advanced” button in the Separations Tab in the window above which opens the Advanced Separations Settings window below. Set the appropriate LPI Frequency and angle for each color in the separation. The shape of the dot can also be selected next to Halftone Type. If the process colors are checked in this window, deselect them. When finished click OK.



Now just click OK in the Print window and the separation will be sent to your RIP or postscript printer for film output.

Suggested Film Output Settings



Simulated Process Separations:

Dot Shape - Elliptical

All films 26 Degrees at 55 LPI.

Mesh count 280 - 305 Top Colors.

Mesh count 156 - 230 Underbase White.

Mesh count 200 - 230 Highlight White.

CMYK Separations:

Dot Shape - Elliptical

All films 22.5 Degrees at 55 or 60 LPI.

Mesh count 305 - 330 Top Colors.

Mesh count 200 - 230 Underbase White.

Mesh count 230 Highlight White.

Print Order: White Base - Yellow - Magenta
Cyan - Highlight - Black

Grayscale Separations:

Dot Shape - Elliptical

All films 26 Degrees at 55 LPI.

Mesh count 280 - 305 Top Colors.

Mesh count 156 - 230 Underbase White.

Mesh count 200 - 230 Highlight White.

Manual Printing Notes:

Some printers who print manually might want to experiment with using lower LPI settings and mesh for simulated process work. Such as 230 mesh for the top colors along with outputting films at 45 LPI - 50 - LPI - 26 degrees.

Duo-Tri-Quad Tone Separations:

Dot Shape - Elliptical

All films 26 Degrees at 55 LPI.

Mesh count 280 - 305 Top Colors.

Mesh count 156 - 230 Underbase White.

Mesh count 200 - 230 Highlight White.

Basic Spot Color Separations:

Dot Shape - Elliptical

All films (No Tints - All Solid Colors) 26 Degrees at 300 LPI .

All films (With Tints And Gradients) 26 Degrees at 50 LPI .

Mesh count 156 - 200 (designs using no white base).

Mesh count 200- 305 Top Colors (designs with a white base).

Mesh count 156 - 200 Underbase White.

Index Separations:

No Frequency, Screen Angles or Dot Shape Required.

Mesh count: 280 - 305 Top Colors.

Mesh count: 156 - 230 Underbase White.

Mesh count: 200 - 230 Highlight White.

Index Separations With Halftone White Base & Highlight Channels:

(Settings For Underbase & Highlight Only)

Dot Shape - Elliptical

Underbase & Highlight - 26 Degrees at 50 LPI.

Mesh count 156 - 230 Underbase White.

Mesh count 200 - 230 Highlight White.